

Product : LCD Monitor

Bulletin No. : 02-C/M-E0094

Model : GD15*/GD17*

Bulletin Date : 07.Nov,2002

Buyer :

SUBJECT : EEPROM deleted when monitor turn off,on without signal

Background : GD15,17 model may have below symptom which produced before Nov,2002

* Problem : EEPROM data could be deleted when monitor on/off time without signal.("check signal")

* Symptom

- OSD color is changed,wrong value is displayed or OSD is not displayed.
- Screen becomes bright or PIP function is not operated.
- No TV display or TV mode malfunction (this symptom is only for GD15 model)

* Samsung applied countermeasure from 23.Oct.2002

Root cause :

- Communication error when monitor turned off with no signal condition.("Check Signal")

Solution :

- 15" : Replace Micom and capacitor.
- 17" : Replace Micom.

Location No.	Region	OLD (before) Parts		NEW (changed) Parts	
		SEC Code	Description	SEC Code	Description
150MP					
MICOM	USA	BN97-00054W	GD15NS_1.2E	SAME	GD15NS_1.3E
	EUROPE	BN97-00078C	GD15AS_1.1	SAME	GD15AS_1.2
	JAPAN	BN97-00096R	GD15NS_1.3J	SAME	GD15NS_1.4J
C199	All	None	-	2203-005065	1000nF,+80-20%,10V
170MP					
MICOM	USA	BN97-00096N	GD17NS_1.0E	SANE	GD17NS_1.1E
	EUROPE	BN96-00100A	GD17AS_1.0	SANE	GD17AS_1.1

Application

Reference () Only Defected sets (O) Whole sets ()

Attachment

Schematic Diagram (O) None ()

Published by : C.J.Oh

Checked by : M.S.Park

Approved by : K.S.Yeo

* Bulletin No: 02-C/M-E0094

. Work instruction for MICOM IC replacement

(150MP => Micom + capacitor, 170MP => Micom)

Front side



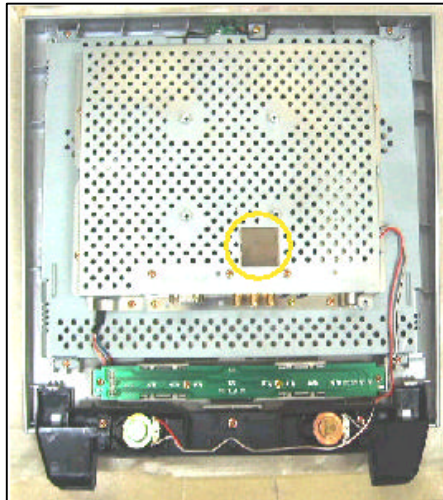
Back side



Remove screws of back cover and open back cover from bottom side



Remove Micom cover of metal shield and replace Micom. Be careful of MICOM direction



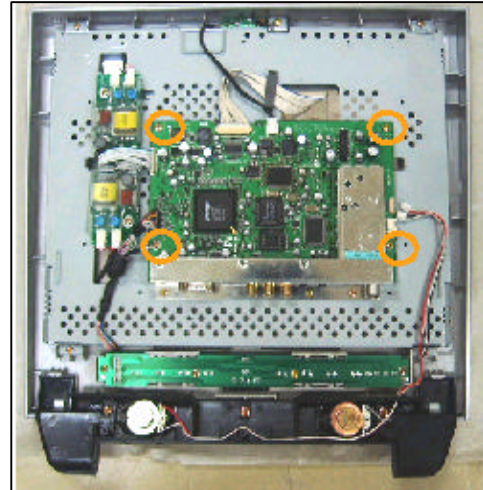
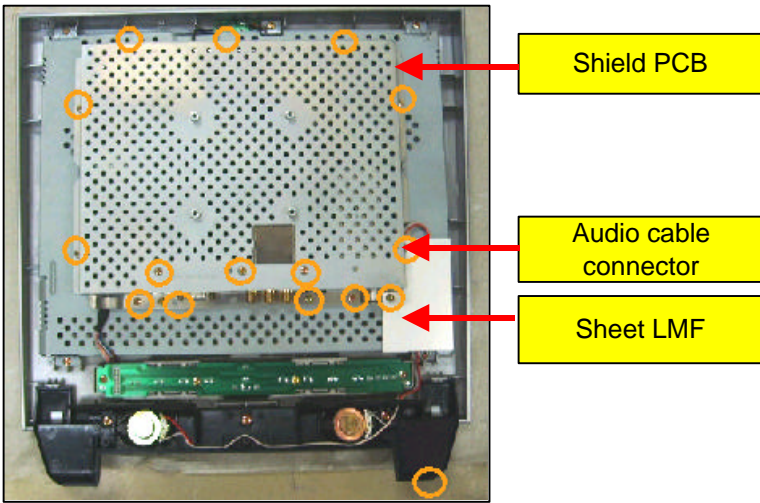
Capacitor Adding of 15" 150MP

Remove Audio cable

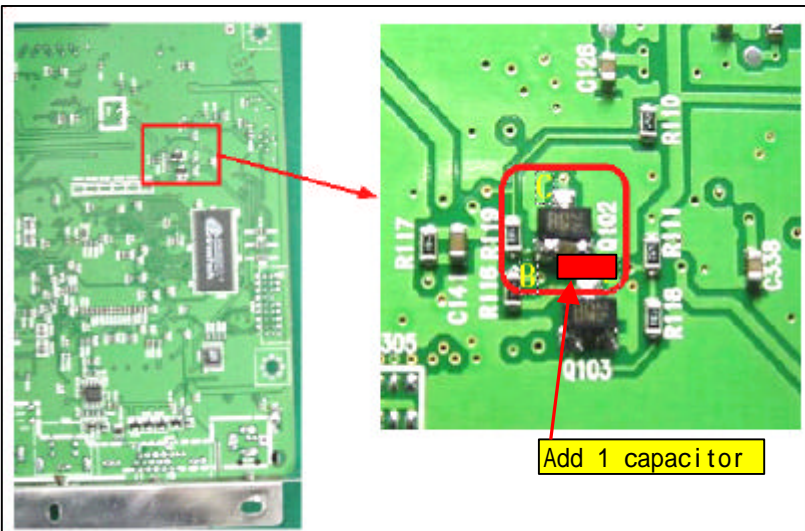
Remove screws (15 pcs) and shield PCB

Remove 4 screws of main board and

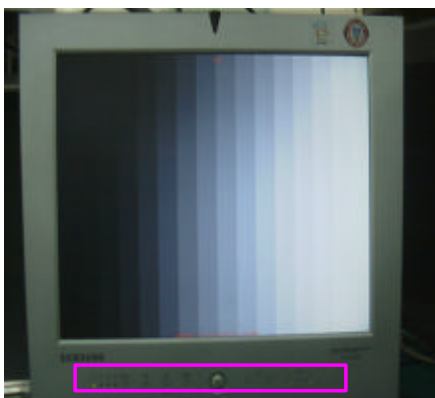
remove inverter,function,LVDS,IR cables



Add 1 capacitor on the bottom side of main board



Bottom side of main board
 Add 1 uF capacitor between B and E of Q102
Be careful not to short B and E



After MICOM (and capacitor) replacemet,
Do Color Auto Adjustment work as below process

- Display 16 gray pattern.
- Push "-", "+", "Menu" button at the same time.

Then, automatically color adjustment will be done.
 * Check display by each source.

